

Training on Climate Change Adaptation  
14<sup>th</sup> October 2015



On behalf of:



of the Federal Republic of Germany

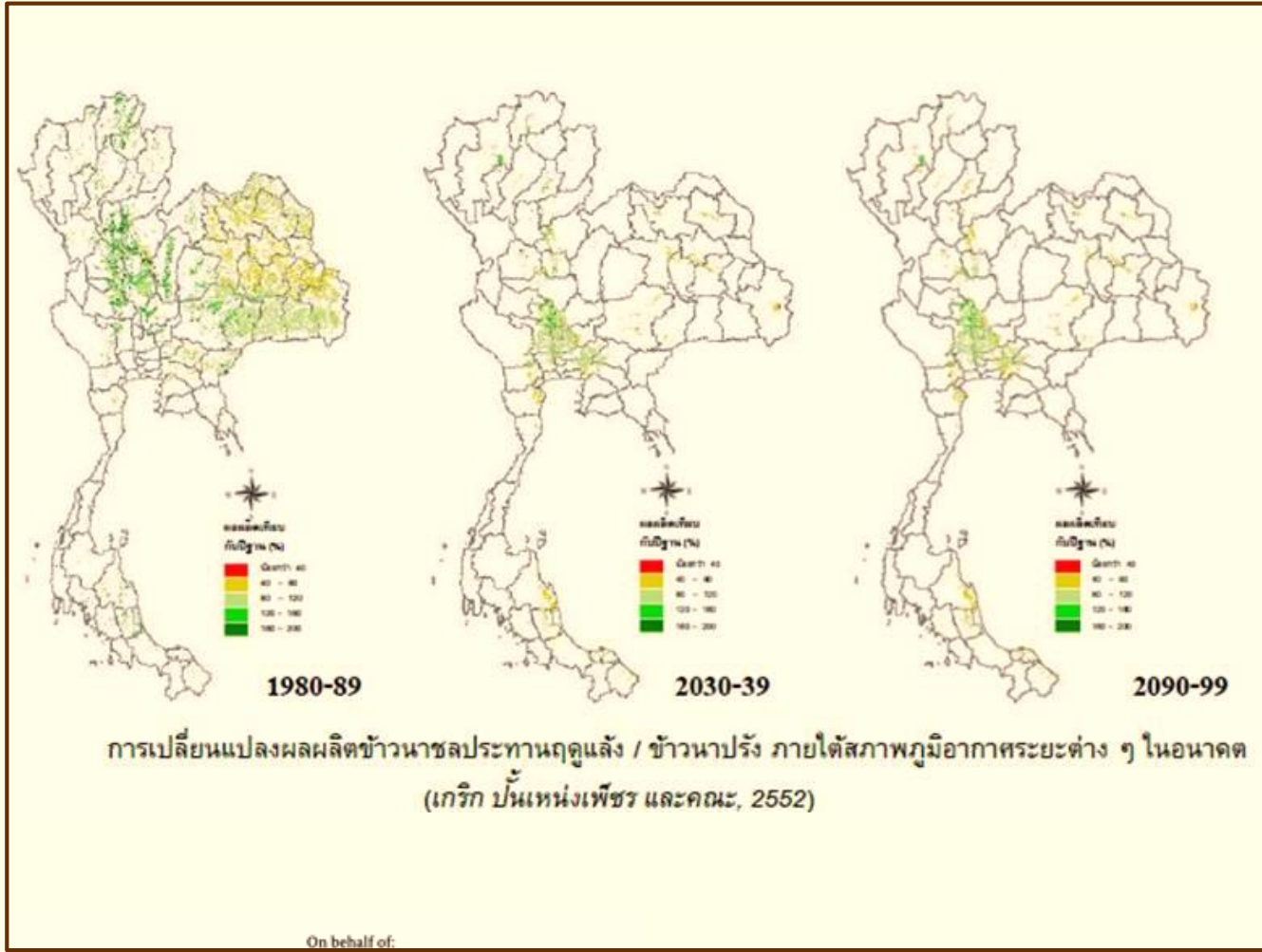


# Climate Change Vulnerability Assessment Process in NAP phase 1 (Climate Change Vulnerability Assessment in Thailand)

Kollawat Sakhakara, Ph.D.

Climate Change Coordination and Management Division  
Office of Natural Resources and Environmental Policy and Planning  
Ministry of Natural Resources and Environment

# Overview of Thailand Climate Change Policy



# Overview of Thailand Climate Change Policy



- No Legal Binding on Climate Change Issues
- Climate Change Master Plan (CCMP) 2015-2050  
*(Approved by the Cabinet on July 14<sup>th</sup> 2015)*
- Adaptation is 1 of the 3 key components of CCMP
- Developing Drafted National Adaptation Plan (NAP) is a 2-year project.
- NAP 1<sup>st</sup> Phase –Jan to Oct 2015
- NAP 2<sup>nd</sup> Phase –Dec 2015 to Oct 2016

On behalf of:



of the Federal Republic of Germany



# CCMP Objectives

**National Long-Term/Continual Framework**  
on Addressing Climate Change Situation & Consequences

**National Policy Framework**

Leading to CC Mechanism & Tools

**Guideline and Instruction**

for Agencies in Developing Implementation plans and Financial Allocation

Operation under

**UNFCCC Obligations**

On behalf of:



Federal Ministry  
for the Environment, Nature Conservation,  
Building and Nuclear Safety

**giz** Deutsche Gesellschaft  
für Internationale  
Zusammenarbeit (GIZ) GmbH



# CCMP Missions

## Database Knowledge and Technology Development

เพื่อสนับสนุนการรองรับและปรับตัวต่อการเปลี่ยนแปลงสภาพภูมิอากาศ รวมถึงการพัฒนาแบบปล่อยคาร์บอนต่ำอย่างยั่งยืน

## Climate Change Resilience Strengthening

การบูรณาการแนวทางและมาตรการในการปรับตัวเพื่อรองรับการเปลี่ยนแปลงสภาพภูมิอากาศ

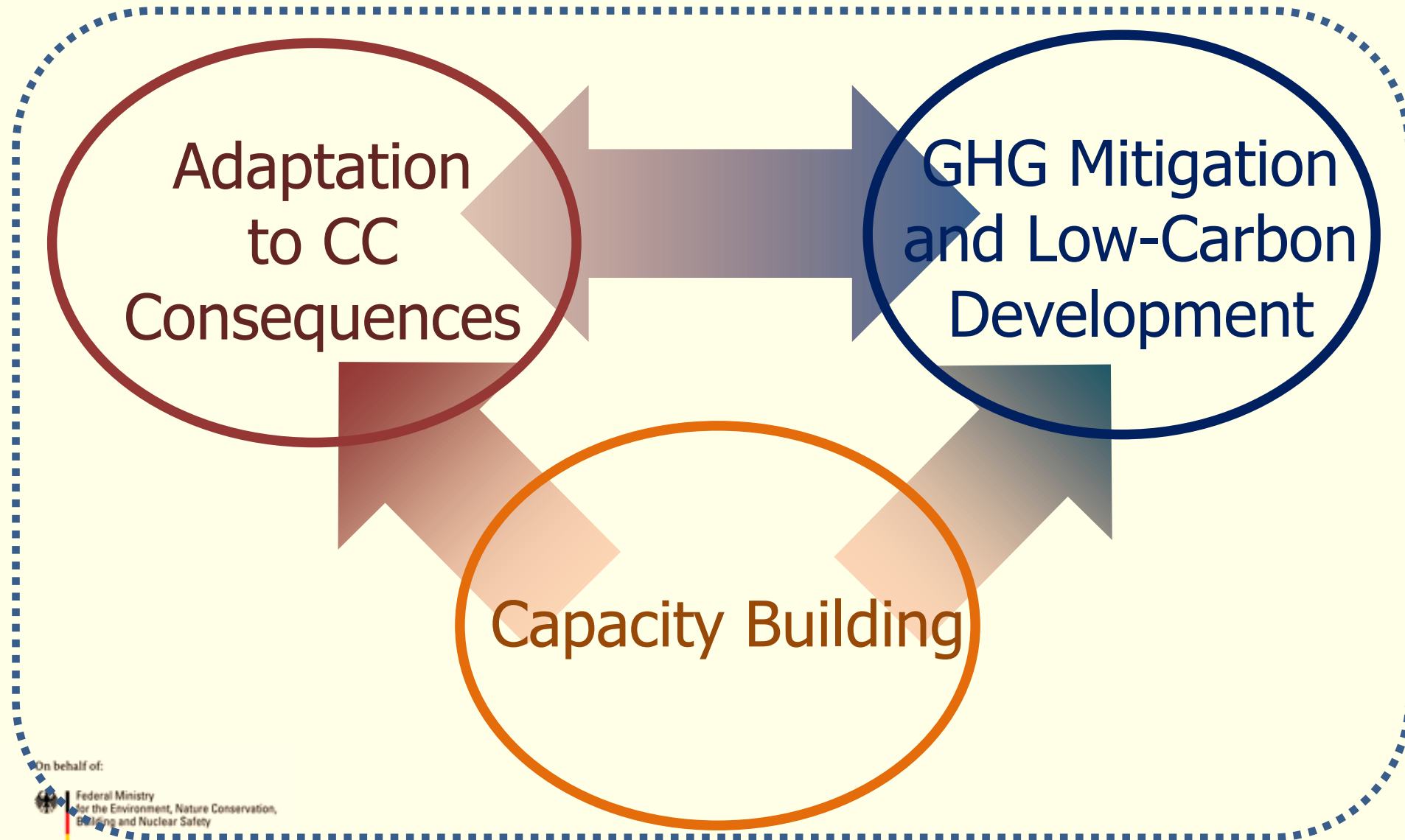
## National GHG Emission Mitigation

สร้างกลไกให้เกิดการเติบโตแบบปล่อยคาร์บอนต่ำอย่างยั่งยืน

สร้างความพร้อมในการดำเนินมาตรการตามนโยบายและแผนด้านการเปลี่ยนแปลงสภาพภูมิอากาศ

## Capacity and Awareness Building

# Linkage of NAP to CCMP



On behalf of:

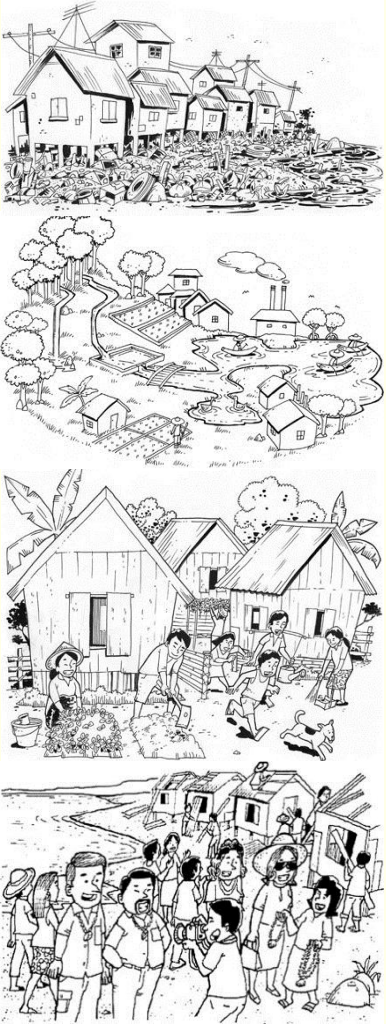


Federal Ministry  
for the Environment, Nature Conservation,  
Building and Nuclear Safety

# The Adaptation Component in CCMP

## Climate Change Adaptation

- Flood, Drought, and Water Management
- Agriculture and Food Security
- Tourism
- Public Health
- Natural Resource Management
- Human Settlement and Security



On behalf of:

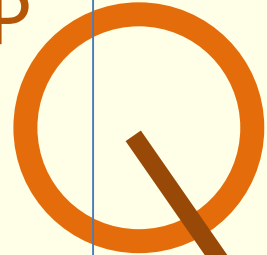
**giz** Deutsche Gesellschaft  
für Internationale  
Zusammenarbeit (GIZ) GmbH



Federal Ministry  
for the Environment, Nature Conservation,  
Building and Nuclear Safety

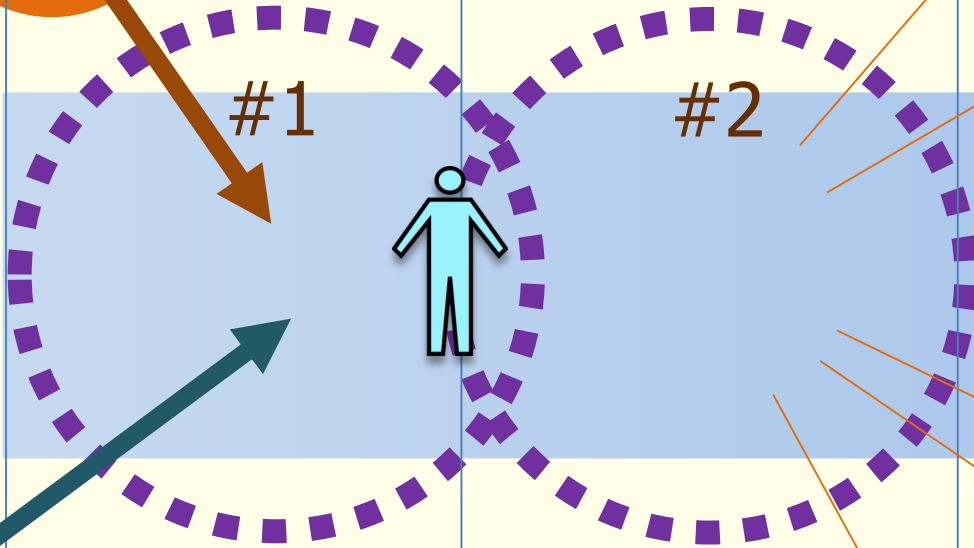
# NAP Roadmap (2-Year Project)

CCMP

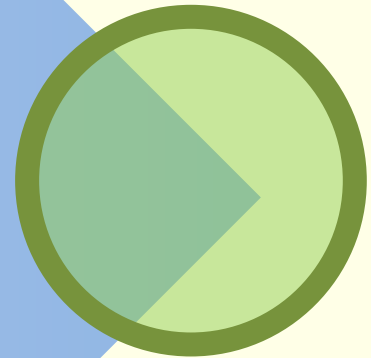


# NAP

- UNDP: MADRID  
Mainstreaming Disaster Risk Reduction and Climate Change Adaptation
- GIZ-BMUB:
  - CCMP Implementation
  - Risk-NAP Support



Resilient

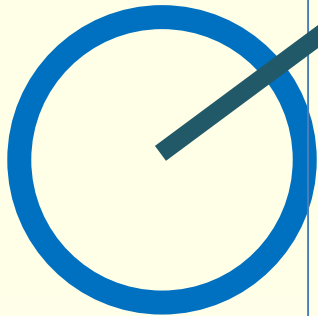


Sustainable

- MOEJ:
  - NAP workshop (tentatively)
- JICA:
  - ADAP-T project

- Line Ministries  
Climate Change Strategic plans: MOH, MOAC

Project-based Adaptation



On behalf of:

Federal Ministry  
for the Environment, Nature Conservation,  
Building and Nuclear Safety

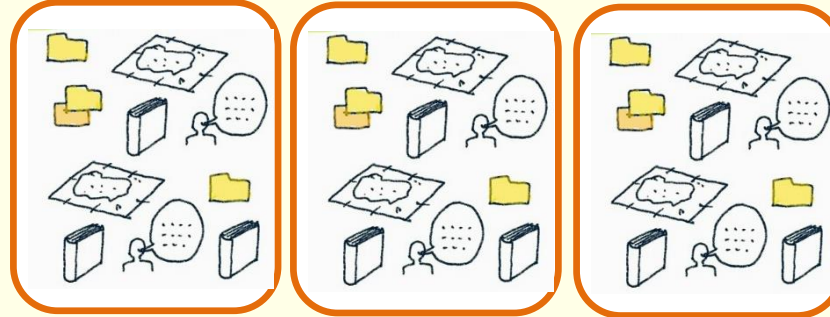
01.2015

10.2015

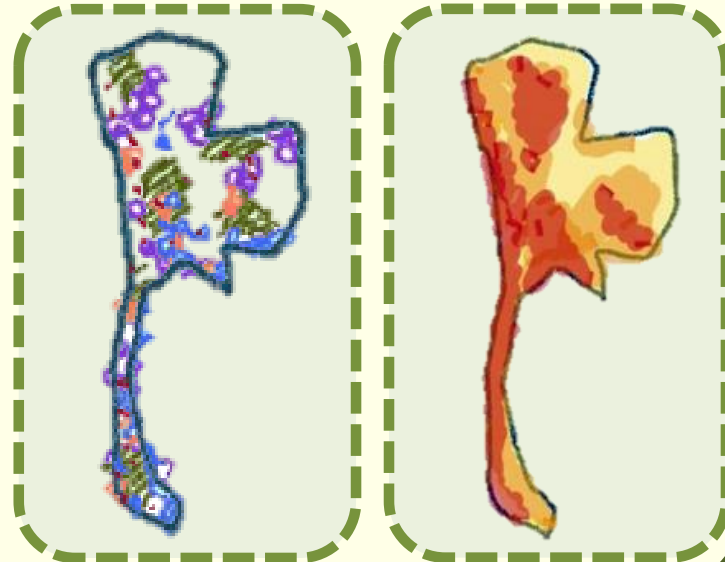
10.2016

# Conceptual Work of 1<sup>st</sup> Phase NAP *(in progress)*

## 1. Vulnerability database



## 2. Vulnerability Circumstance



## 3. Suggestions of drafting NAP

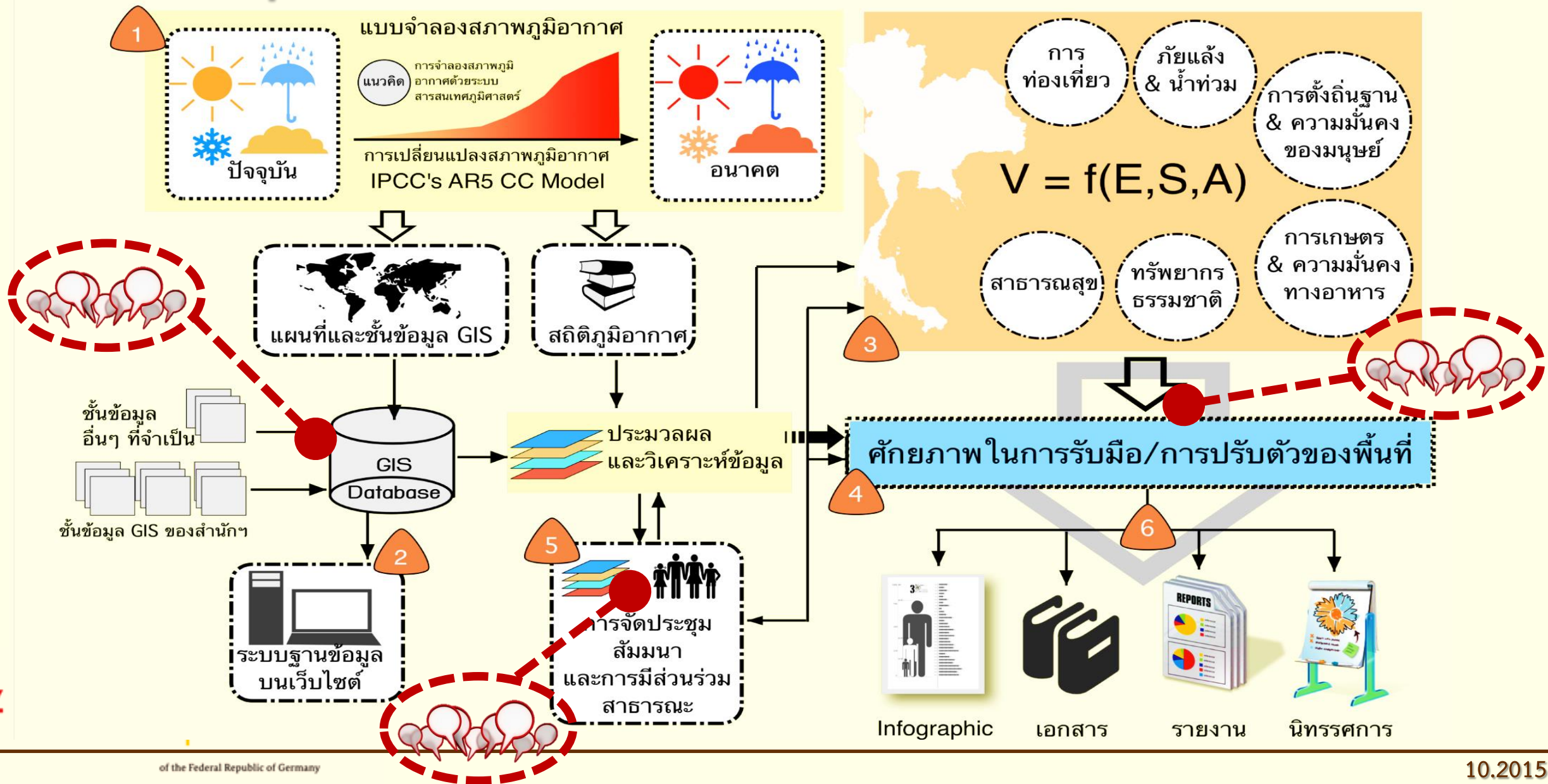
- Gaps and Needs
- Priority List
- Methodologies

On behalf of:



Federal Ministry  
for the Environment, Nature Conservation,  
Building and Nuclear Safety

# Conceptual Work of 1<sup>st</sup> Phase NAP (in progress)





# Conceptual Work of 1<sup>st</sup> Phase NAP *(in progress)*

## Concept of Finding CC Vulnerabilities

### Impacts

#### Exposure Factors

- Drought
- Flood
- Flash Flood
- Land Slide
- Sea-level Rise
- Coastal Erosion
- Tropical cyclone

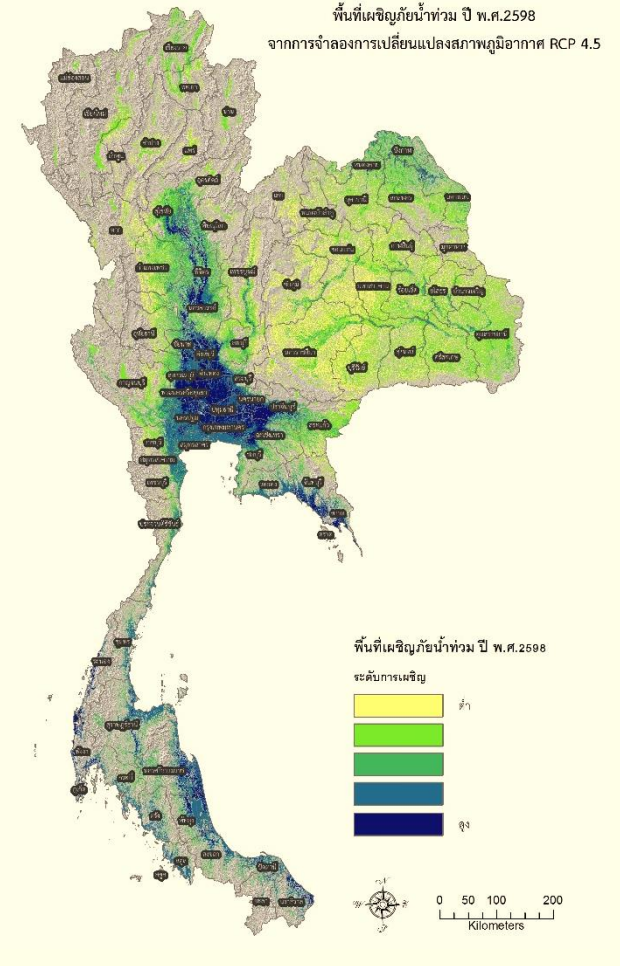
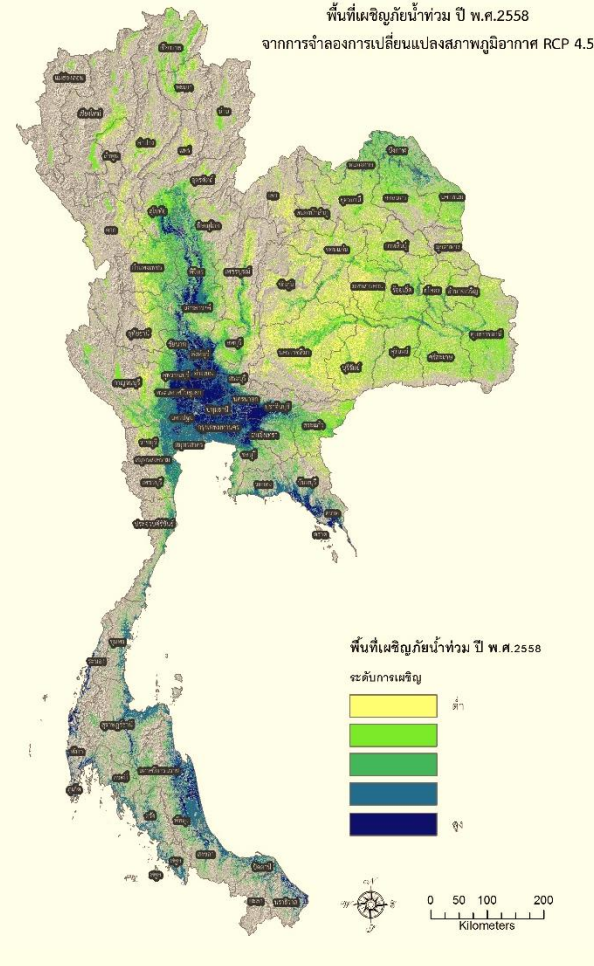
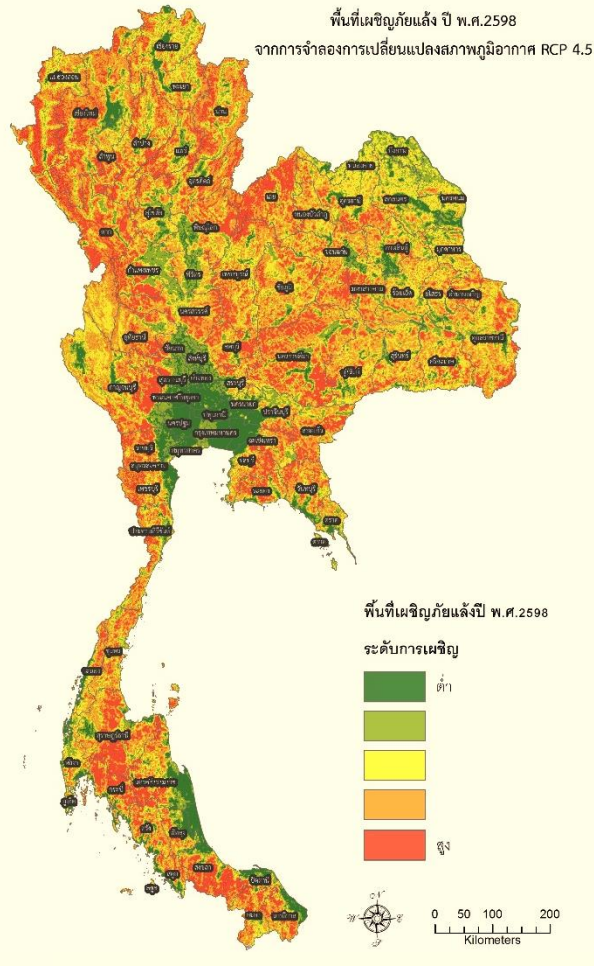
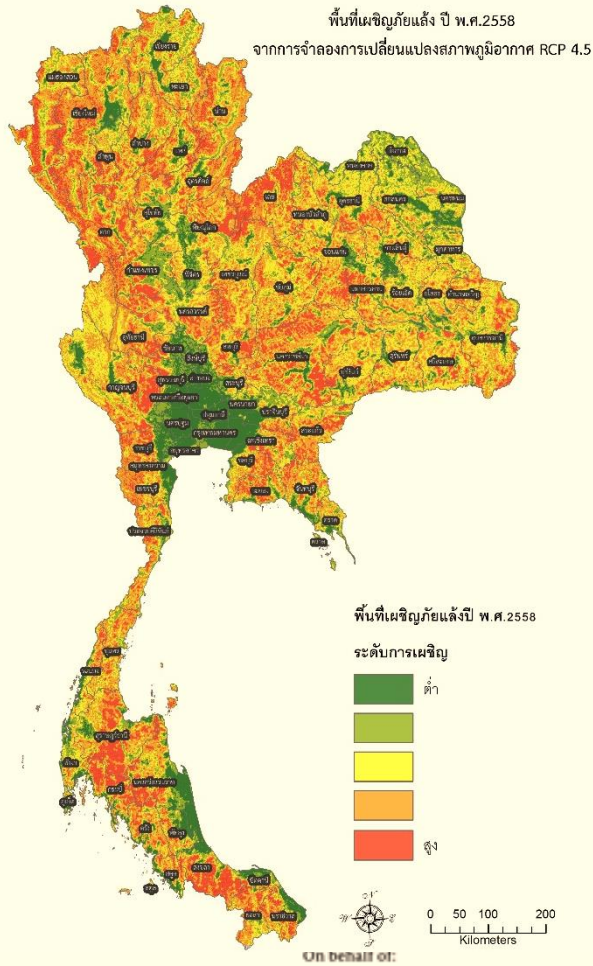
#### Sensitivity Issues

- Agriculture & Food Security
- Natural Resources
- Human Settlement & Security
- Human Health
- Tourism

#### Adaptive Capacities

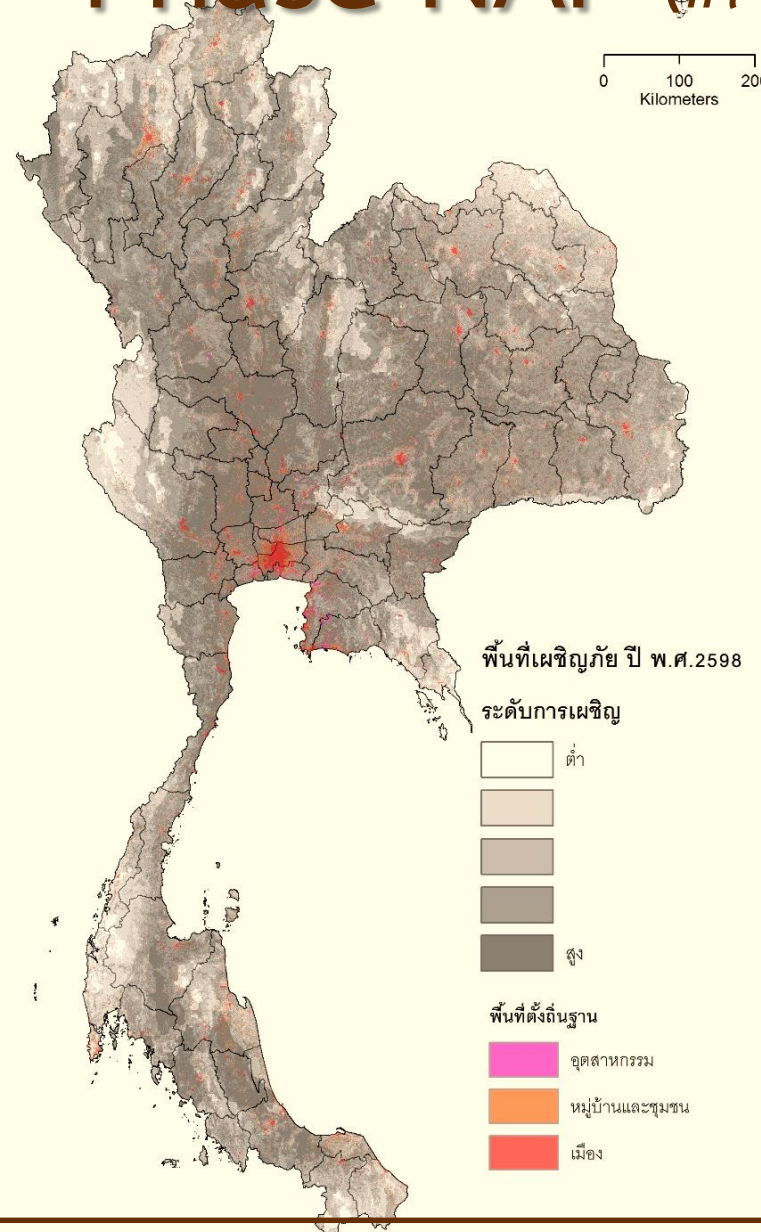
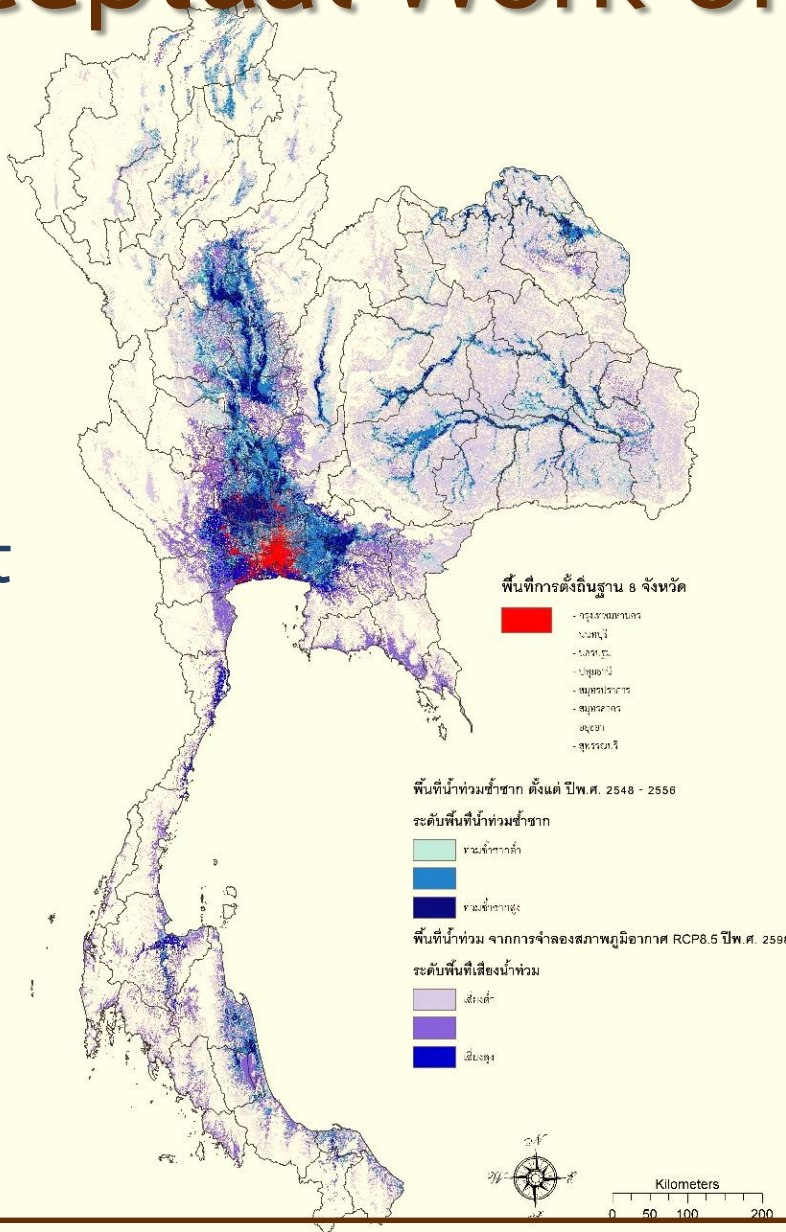
- Socio-Economic
- Technology
- Infrastructure & Public Services
- Institution
- Knowledge

# Conceptual Work of 1<sup>st</sup> Phase NAP *(in progress)*



# Conceptual Work of 1<sup>st</sup> Phase NAP *(in progress)*

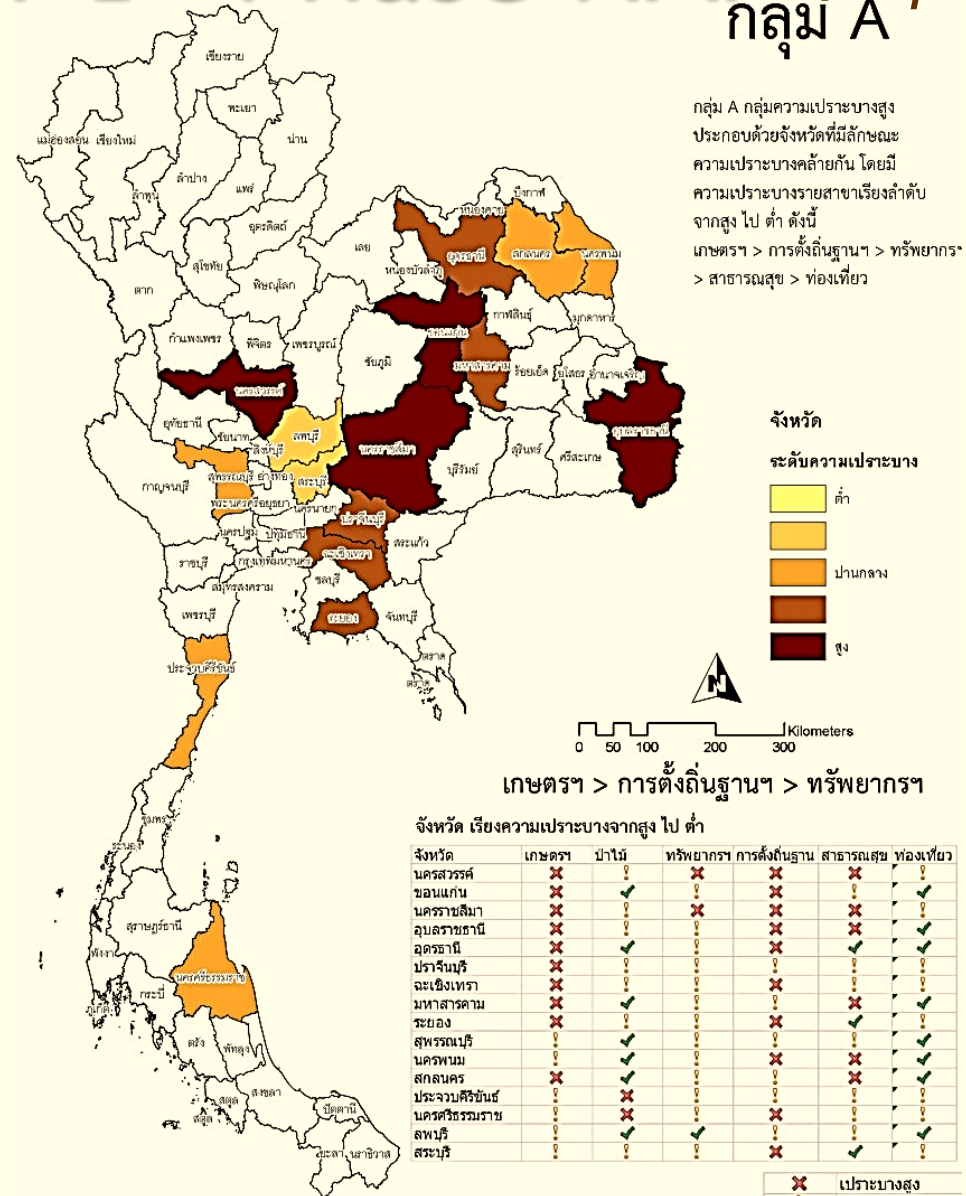
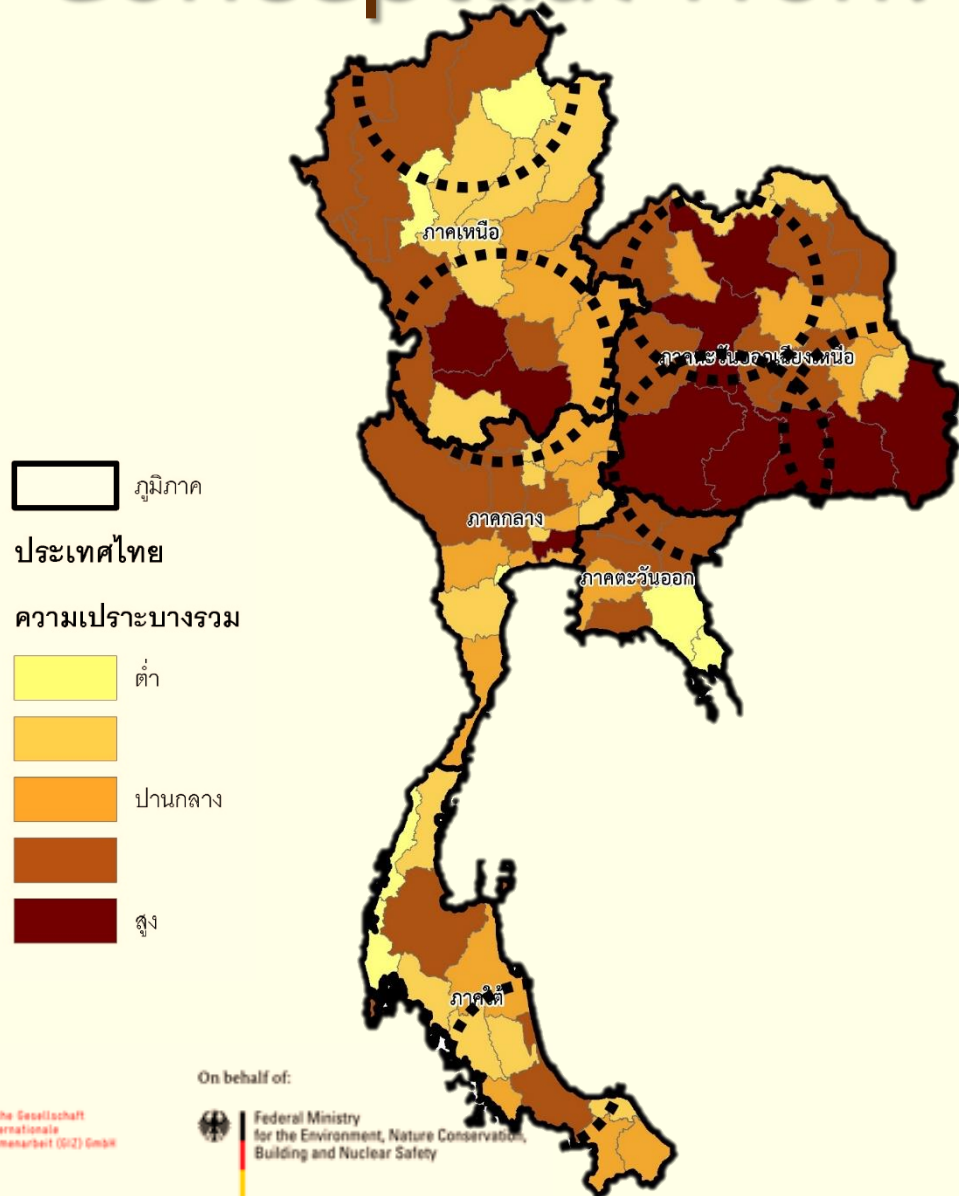
Human  
Settlement  
Flood  
Impact



Human  
Settlement  
Overall  
Impact

# Conceptual Work of 1<sup>st</sup> Phase NAP *(in progress)*

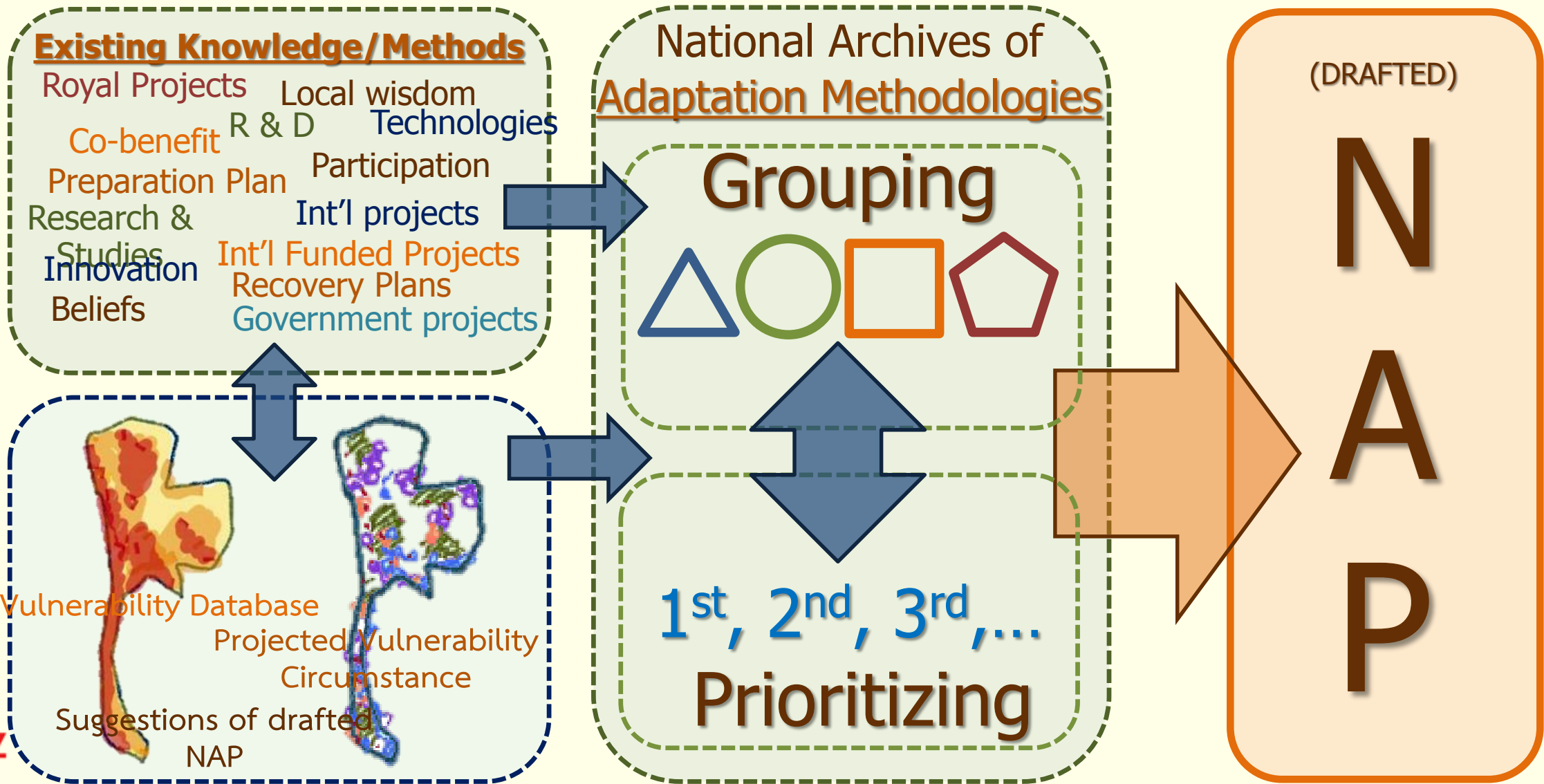
## กลุ่ม A



On behalf of:  

 Federal Ministry  
 for the Environment, Nature Conservation,  
 Building and Nuclear Safety

# Conceptual Work of 2<sup>nd</sup> Phase NAP





# Constraints and Opportunities

- Local research and studies
- Data Accessibility/Availability
- Contribution and Standardization of Databases
- Indigenous Knowledge Database
- Knowledge and Awareness Gaps
- Socio-Economic Co-benefits Linkages
- Inadequate Financial Supports

On behalf of:



Federal Ministry  
for the Environment, Nature Conservation,  
Building and Nuclear Safety



On behalf of:



Federal Ministry  
for the Environment, Nature Conserv  
Building and Nuclear Safety

connecting



climateaction

of the Federal Republic of Germany

# Thank you

Climate Change Coordination and Management Division  
Office of Natural Resources and Environmental Policy and Planning  
Ministry of Natural Resources and Environment  
Rama VI Rd., Prayathai District, Bangkok 10400 Thailand  
T/F: +66 2265 6692, +66 2265 6500 ext. 6842 ; [www.onep.go.th](http://www.onep.go.th)